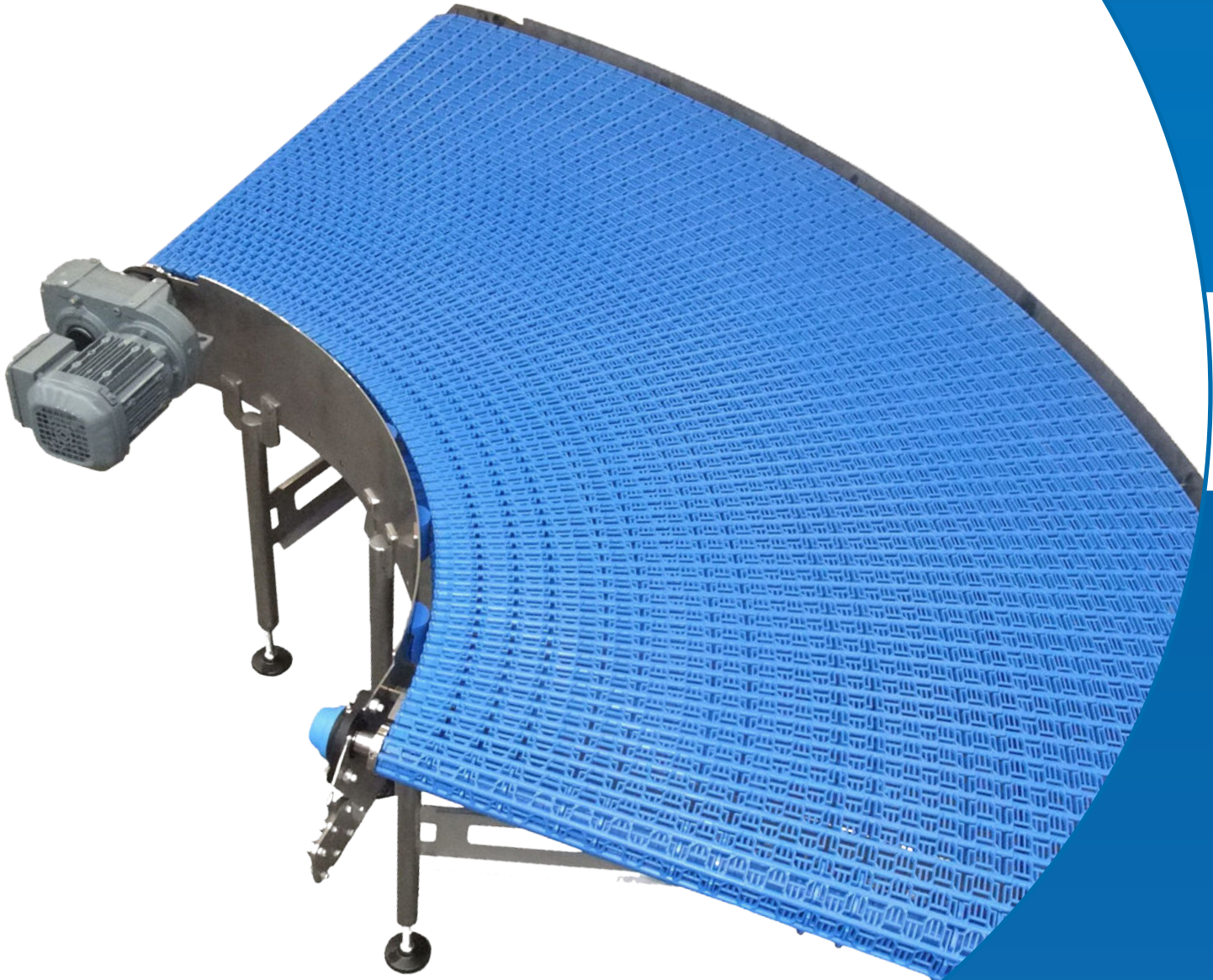


BELTS & CONVEYING SYSTEMS





AN INTRODUCTION

iConvey is a brand of Jansen Metal Products and is used for the delivery of high-quality conveying belts and conveying systems, offered directly from a catalogue. The Jansen Metal Products iConvey belts are already more than 45 years known for their Excellent quality & long lifetime. Thanks to iConvey not only industries with a preference for hygienic and easy to clean stainless steel conveying systems can benefit from these systems. We also deliver steel coated and special heavy duty conveyors to non-food industries.

The power of iConvey is an extensive and far standardized delivery program. Short delivery times, quick response and high flexibility are important values in which we believe we can be your excellent partner.



Besides the standardised iConvey delivery program Jansen Metal Products is also delivering bespoke conveyors like for example 31° or 270° curves. Next to this we deliver Helix spiral-conveyors up to a belt width of 1300 mm equipped with our Multi-Way Curve belt which is considered one of the strongest in the industry! Even wider Helix-spirals are possible optionally.

With our own engineers experienced mechanics & production employees we are also able to assist you in with your (complete) projects and take this up from design engineering up to the assembly of the control cabinet. We have a lot of experience in various food-industries but also in non-food and in the recycling industry.

Besides the iConvey delivery program Jansen Metal Products has got more than 100 years of experience in the production of stackable pallets and racks in (stainless) steel & aluminium. Furthermore we can be an extension of your own production capacity for various steel parts as we are for our partners for many years.

Jansen Metal Products your partner conveying systems, steel pallets, bespoke solutions and parts.





The **Multi-Way Curve (flush grid)** is our Curve belt which offers many advantages. Because of the unique design with a tight radius, this belt is ideal for production areas with little space. The curve starts immediately (no tangent), so no straight inlet and outlet sections are necessary in these curves. The Multi-Way Curve has conical links and is driven by drive wheels over the entire belt width. Two important differences between flexbelts and the Multi-Way Curve is that the belt does not wear on the inner radius of the conveyor, due to the fixed radius of the curve belt. Also the Multi-Way curve belt has a very compact inner radius which is independent of the belt width, where flexbelts have a innerradius of 2 times the belt width. Because of the open (flush grid), but safe structure this belt can be cleaned easily and is perfectly suited for the food industry.

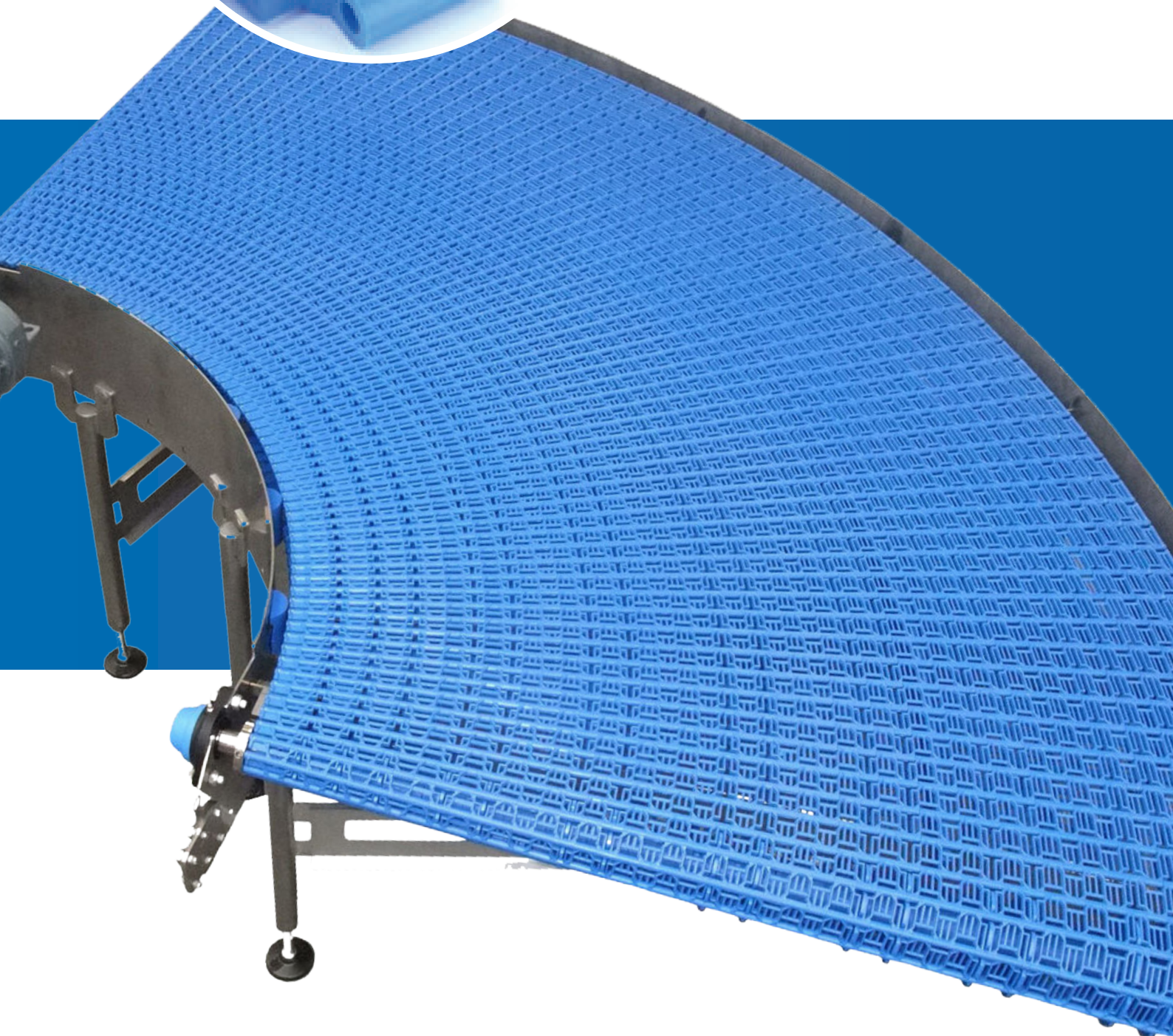
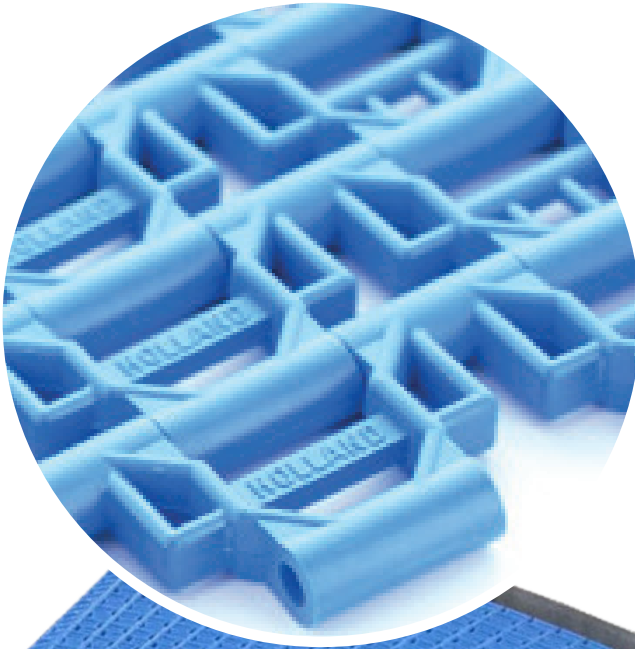
ADVANTAGES

- Very tight inner radius, no straight in- and outfeed section needed (no tangent).
- Open structure (flush grid) with small (5-6 mm) "finger-safe" openings and therefore excellent cooling properties.
- The belt is strong, suitable for high loads, long life time (made out of Polyamide, which is in compliance with food legislation, colour blue).
- Suitable for running at high speed.
- Constant and perfect positioning of the conveyed product.
- Endless belt, low maintenance, simple construction, modular belt (no special tools required for maintenance and repair).
- Silent running.



DELIVERY

Multi-Way Curve Belts are available in a few days. Complete curve conveyors (available within 3-4 working weeks) can be executed with 3 different radii options: 767 & 942 mm and the special compact version with an inner radius of 600 mm. We deliver our curves standard in 45°, 90° & 180° executions but odd-dimensions like for example 31° or 270° are also possible.





The new **Multi-X** transport belt meets all safety requirements. The belt has a very open structure and through the special “X-shape” the (finger) safety is guaranteed. The strength in combination with the open structure (flush grid) of 44% is a unique feature for belts with a pitch of 25 mm.

In addition it is also possible to work with smaller transitions like “knife edge”. This belt is compatible with all Multi-Way straight belts.

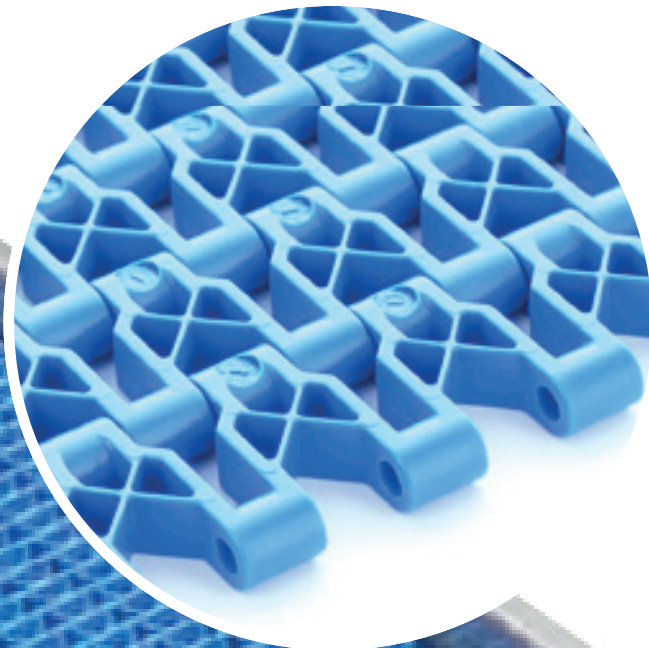
ADVANTAGES

- “finger safe belt” according CE regulations
- Pitch 25 mm, knife edge possible
- Strongest belt from our product range
- Very high belt speed possible
- Endless belt, low maintenance, simple construction, modular belt
(no special tools required for maintenance & repair)
- Silent running

DELIVERY

Belt widths start from
175mm and go up to **4000mm**

(other belt widths on request)





The Multi-Way **Coarse Mesh** belts are specially designed for its open structure. With 64% open, the Multi-Way Coarse Mesh is used in for example cooling- freezing- and buffering systems. But also in other industries where this open structure is an advantage like abrasive environments (bag handling systems).

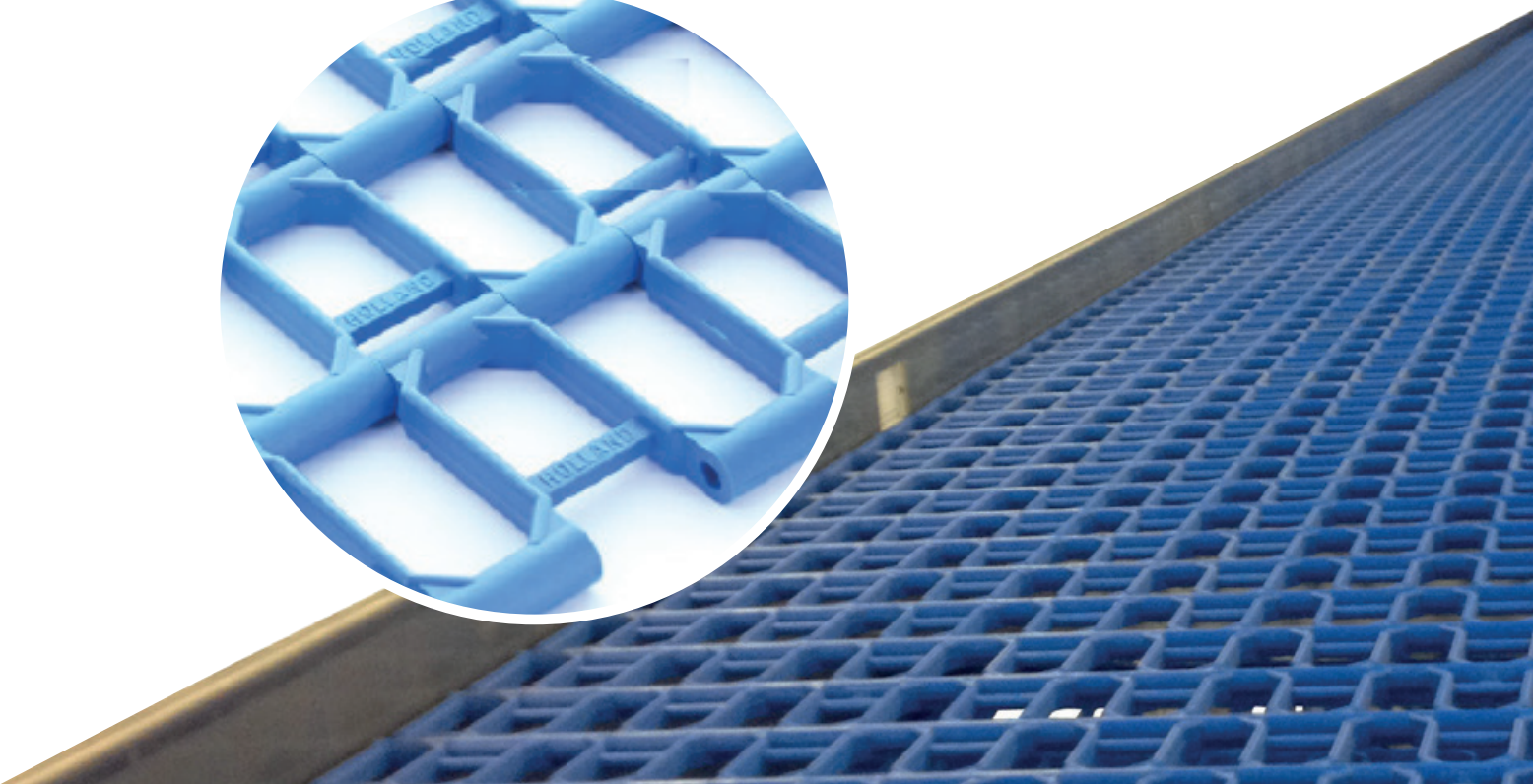
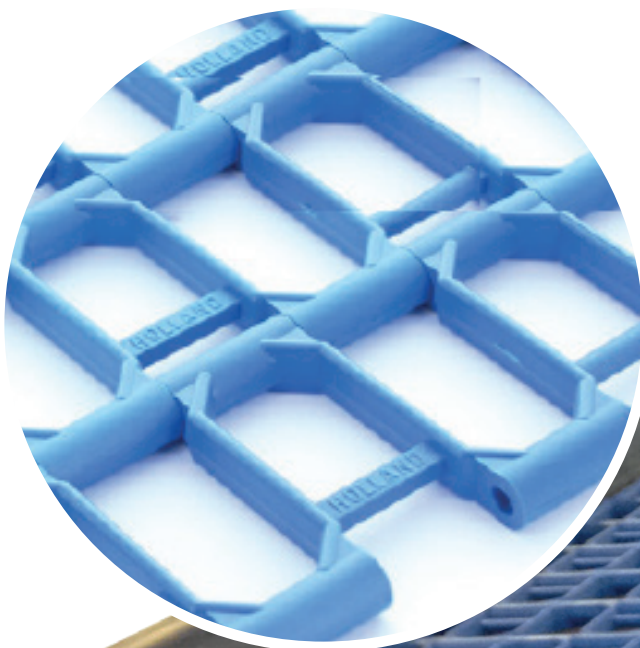
ADVANTAGES

- Very open structure, excellent cooling properties.
- Silent running.
- Strong, high load, long lifetime (made out of Polyamide, blue).
- Constant and perfect positioning of the conveyed product.
- Endless belt, low maintenance, simple construction, modular built (no special tools required for maintenance and repair).

DELIVERY

Belt widths start from
100mm and go up to **4000mm**

(other belt widths on request)





The Multi-Way **Flat Top** belts are specially designed for its closed structure to convey small products or to be used in an environment where manual labour is done at the conveyor.

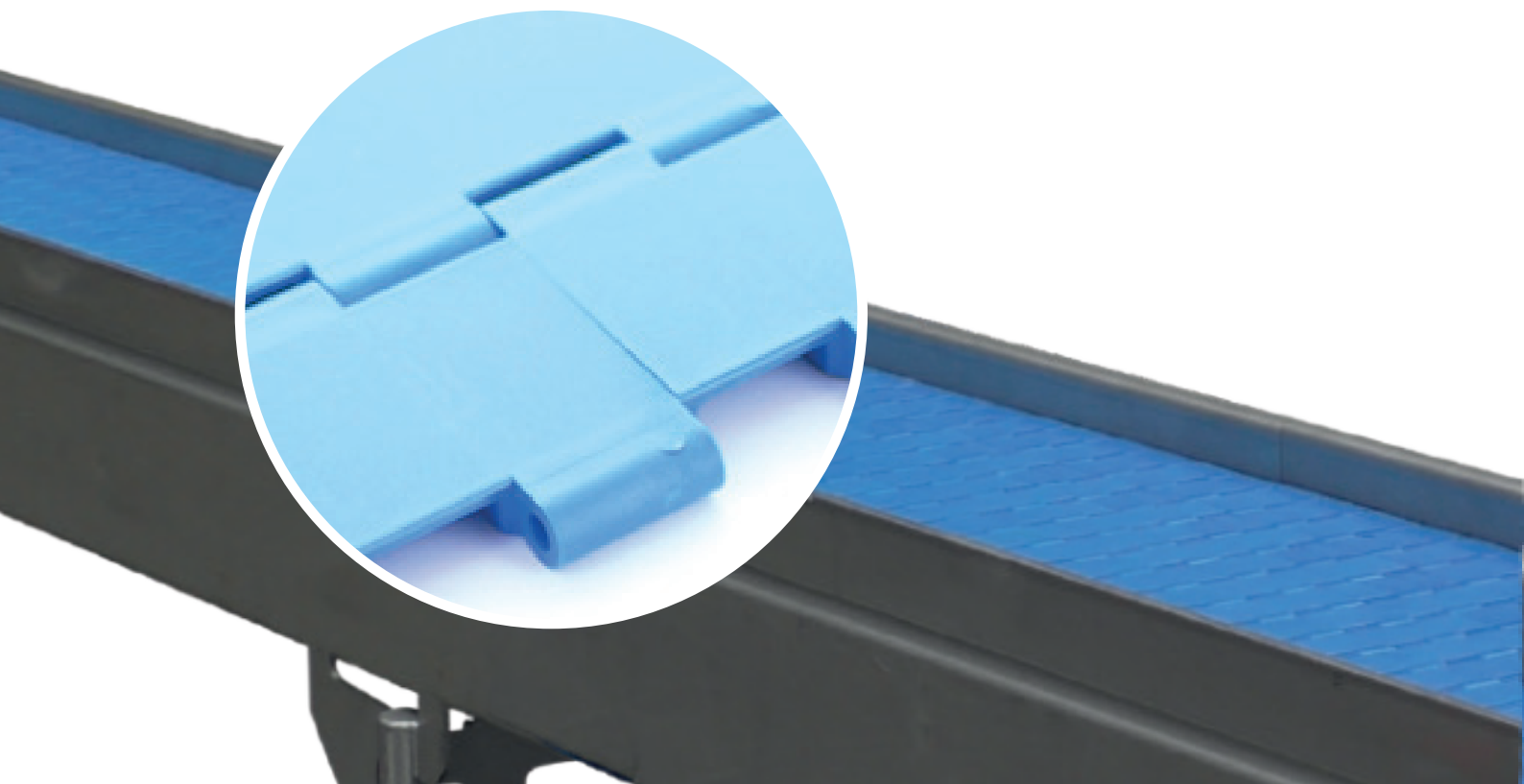
ADVANTAGES

- Flat surface.
- Suitable to convey small products.
- Strong, high load, long lifetime (made out of Polyamide, blue).
- Constant and perfect positioning of the conveyed product.
- Endless belt, low maintenance, simple construction, modular belt (no special tools required for maintenance & repair).
- “finger safe belt” according CE regulations.

DELIVERY

Belt widths start from
100mm and go up to **4000mm**

(other belt widths on request)





FLAT TOP PERFORATED

The Multi-Way **Flat Top Perforated** belts are specially designed for its closed structure to convey small products or to be used in an environment where manual labour is done at the conveyor. Due to its small openings (32% open) this conveyor can still be used to aerate or dewater products whilst conveying.

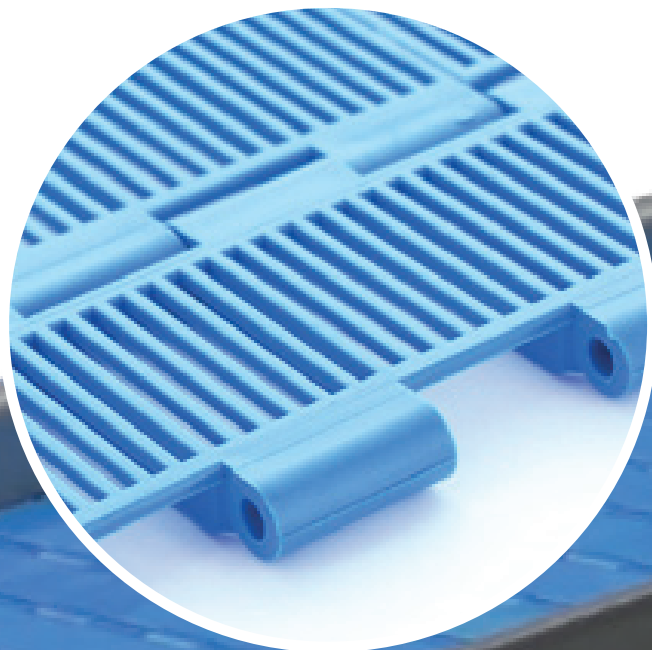
ADVANTAGES

- Flat surface.
- Suitable to convey small products.
- Strong, high load, long lifetime (made out of Polyamide, blue).
- Constant and perfect positioning of the conveyed product.
- Endless belt, low maintenance, simple construction, modular belt (no special tools required for maintenance & repair).
- "finger safe belt" according CE regulations.

DELIVERY

Belt widths start from
100mm and go up to **2300mm**

(other belt widths on request)



OUR ICONVEY SALES TEAM WOULD BE HAPPY TO ASSIST
YOU IN **DUTCH, ENGLISH, FRENCH AND GERMAN**



iConvey

Snelliusstraat 15

7102 ED Winterswijk

The Netherlands

T +31 (0)543 533 031

E info@iconvey.nl

W iconvey.nl